



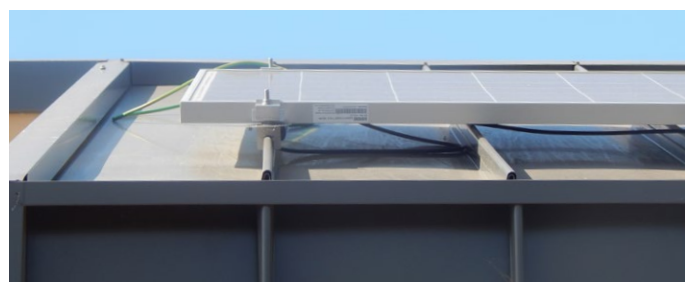
Installation - Roof Sheet Application

Care should be taken when installing Maxline 340 as it has been chosen for its aesthetic performance. As the strongest flat pan profile in Australia the Maxline 340 is fully trafficable however care still needs to be taken when walking in the pans of the sheet, it is advisable to use crawl boards during installation to minimise potential damage. As with most roofing profiles do not step or stand on the ribs of the Maxline 340.

For a Roof with a pitch less than 25 degree's Revolution Roofing recommend to install the Maxline Roofing Spine system, refer specific installation instructions regarding the Maxline Spine.

Ensure the purlins are at the appropriate spacing and they are level so not to cause distortion when installing the Maxline sheets. Install 5 – 6 sheets and then check the aesthetics of the Maxline profile, should there be excessive oil canning stop and check the clips are straight and that the purlins are level. If any purlins are found to be out of alignment they should be fixed before proceeding further.

Anticon/Roof Insulation can be installed under Maxline 340 when installed as a Roof Sheeting, however if the insulation is thicker than 55mm a thermal spacer should be installed. Check with the Thermal Spacer manufacture that the chosen Spacer is suitable to be used because many products on the market are not designed to be installed on a roof pitch greater than 5 degrees.



Solar Panel installation clamps designed to be used with Maxline 340 are available from Mak Fasteners <http://makfasteners.com.au/Products/ByManufacturer/S-5!/Clamps/SClamps/tabid/144/Default.aspx>



Fall Protection and Static Lines compatible for Maxline 340 are available from Safety Link <http://www.safetylink.com/>

Installation - Wall Cladding Application

Maxline 340 is intended to be installed as a vertical wall cladding. Whilst it can be installed horizontally the aesthetic performance of the profile will be different than when installed vertically and should be considered before choosing this profile.

Revolution Roofing suggest installing 5 - 6 sheets of Maxline and check the aesthetic performance of the profile before proceeding with the entire installation. At this point a determination can be made whether to proceed, or if the foam padding needs to be removed, or if the substrate requires attention.

The foam padding on the Maxline 340 concealed clip can be removed when installing as a Wall Cladding as it does not serve a functional purpose for this application. During installation if the foam padding is causing interference or causing the pan to bulge Revolution Roofing advise removing the foam.

When installing Maxline 340 the installer should first check that the substrate is level and pack out any areas which are higher or lower. Maxline 340 should be installed on top hats or battens rather than direct to the structure, typically studwork or structural steel is not installed flush expands and contract at a different rate to the wall cladding causing aesthetic issues.

The Top Hats/Battens still need to be checked to ensure they are aligned and flush before starting installation, any discrepancies should be packed out before commencing installation of the wall cladding.

Once the substrate is level the installer should stringline the first row of clips ensuring all clips are in line, this practice should be repeated throughout the installation to ensure the clips are installed in line throughout.

Distortion in the substrate that is not dealt with before installing the Maxline 340 will cause oil canning and distortion in the profile and can lead to the finished product being rejected.

Oil Canning

Oil Canning is an inherent characteristic of metal wall cladding and roof sheeting which have broad flat areas; oil canning is often the term given to distortion or waviness in the pan of the sheet.

There are measures that can be taken during design and installation to minimise the risk of oil canning such as ensuring the substrate is flush, the panels are fixed vertically, limiting the continuous length of each panel, and choosing an installer who has experience with

installing architectural profiles. Knowledge of thermal movement, material performance, and installation techniques are critical for aesthetic performance of the profile.

Despite the above measures Revolution Roofing cannot guarantee that oil canning will be eliminated because it can also be caused in the manufacture or slitting of the flat coil, manual handling during Production or Installation and by the ambient temperature at the time of installation, or viewing of the profile.

The functional performance of the Maxline 340 is not compromised by oil canning and as such will not be a reason for rejection of the panels.

