





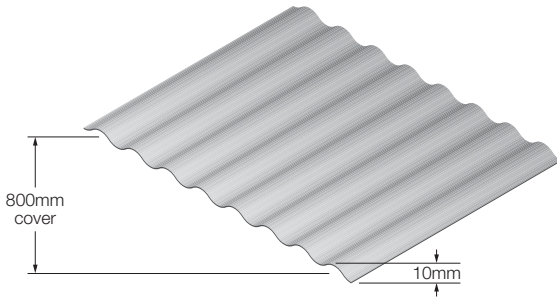
TRUE OAK SUPERIOR CORRUGATED IS SUPERIOR QUALITY CORRUGATED MODELLED ON THE BEST ROOFING FROM THE EARLY 1900'S.

It is stronger, deeper, more water efficient and simply looks better in all applications from roofing to cladding, authentic heritage restorations to cutting-edge modern designs.

TRUE OAK 'MID' 10MM

Features & Benefits:

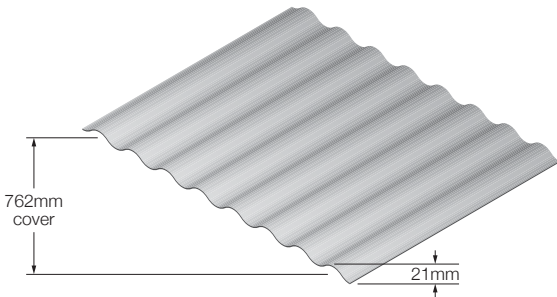
- 38.1mm x 10mm corrugation
- Suitable for walling, ceilings, verandahs and canopy applications
- 50% wider and 100% stronger than 25mm x 6mm standard corrugated
- Improved lapping resulting in no sagging or gaping
- Twice the area for fixings than standard 'mini' corrugated



TRUE OAK 'DEEP' 21MM

Features & Benefits:

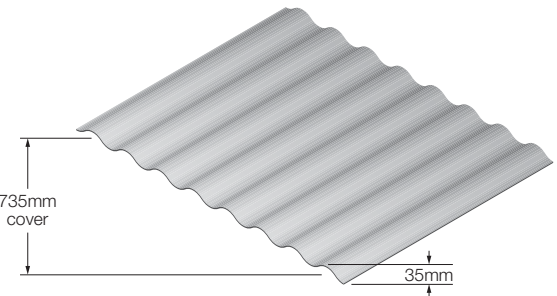
- Minimum roof pitch 3 degrees
- 76mm x 21mm corrugation
- Suitable for roofing, walling and fencing applications
- 40% deeper and 40% stronger than standard shallow corrugated
- This profile is much stronger underfoot and is far less susceptible to denting by foot traffic



TRUE OAK 'SUPER 5' 35MM

Features & Benefits:

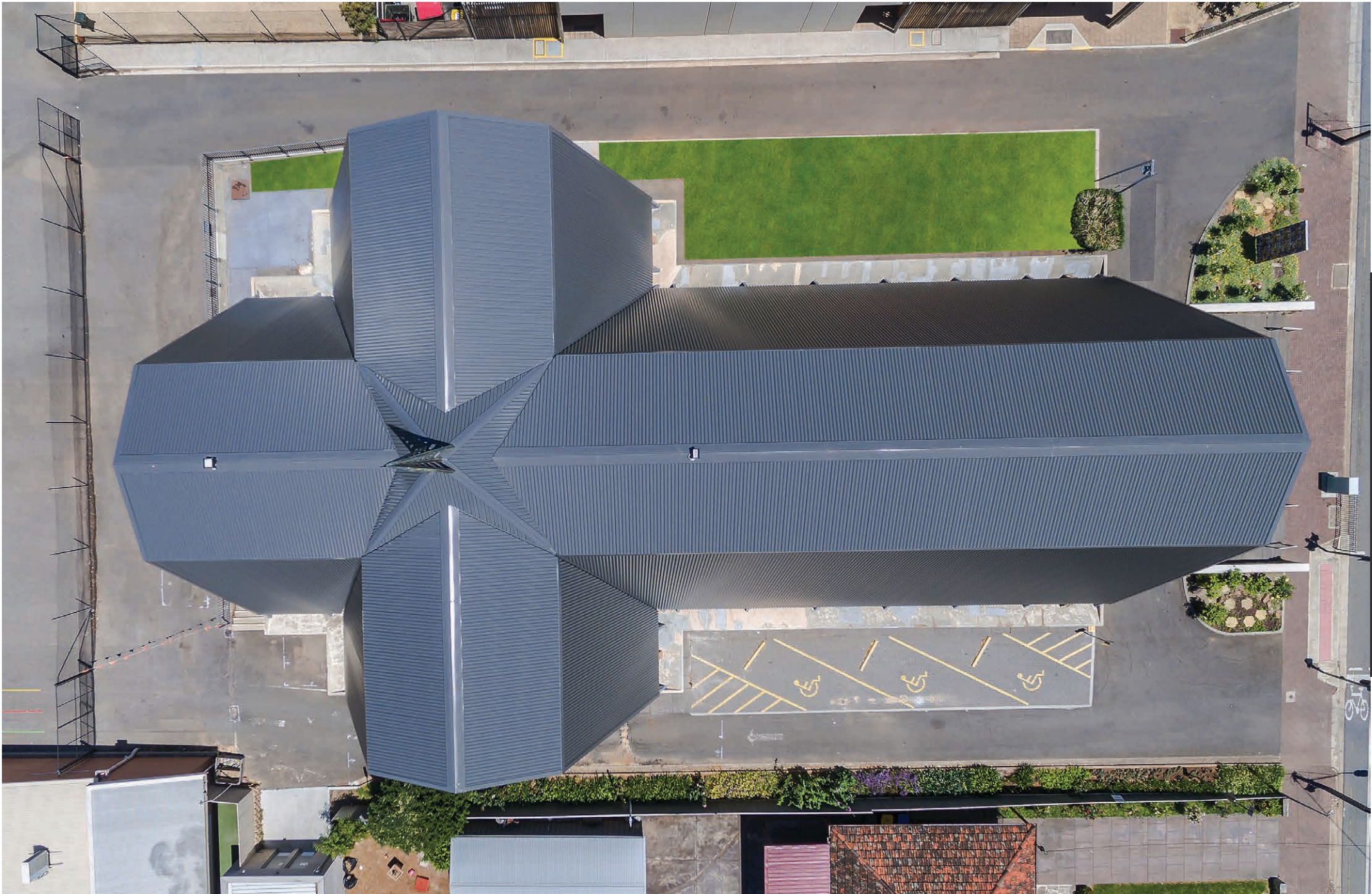
- Minimum roof pitch 2 degrees
- 121mm x 35mm corrugation
- Suitable for roofing and walling applications
- 60% deeper, 50% wider & 100% stronger than standard corrugated
- 50% more water carrying capacity than standard corrugated
- Much stronger underfoot than standard shallow corrugated
- Improved lapping resulting in no sagging or gaping





3 // HECTORVILLE CHURCH // INSTALLER - ROOF AND RENDER

[BEFORE]



[AFTER]



4 // WESTFIELD CAROUSEL SHOPPING CENTRE // ARCHITECT - SCENTRE GROUP // BUILDER - SCENTRE GROUP // INSTALLER - CROWN ROOFING



5 // COMMERCIAL BUILDING MUNDIJONG // DESIGNER - ARNOLD SCHIEBAAN BUILDING DESIGN // BUILDER - JABEZ CONSTRUCTION // INSTALLER - JABEZ CONSTRUCTION





7 // SACRED HEART COLLEGE // ARCHITECT - HAMES SHARLEY // BUILDER - BADGE CONSTRUCTIONS // INSTALLER - ROOFMAX



8 // FINNISS // ARCHITECT - MAX PRITCHARD GUNNER ARCHITECTS // BUILDER - PRITCHARD PROJECTS // INSTALLER - HI-TECH ROOFING



9 // PRIVATE RESIDENCE KENSINGTON // INSTALLER - PHIL CARMAN ROOFING



10 // PRIVATE RESIDENCE GRANGE // ARCHITECT - TROPPO ARCHITECTS



11 // PRIVATE RESIDENCE UNLEY // ARCHITECT - TIM HODGES ARCHITECT // BUILDER - DUTHY HOMES



12 // PRIVATE RESIDENCE - VICTORY // INSTALLER - ALDINGA HOME IMPROVEMENTS



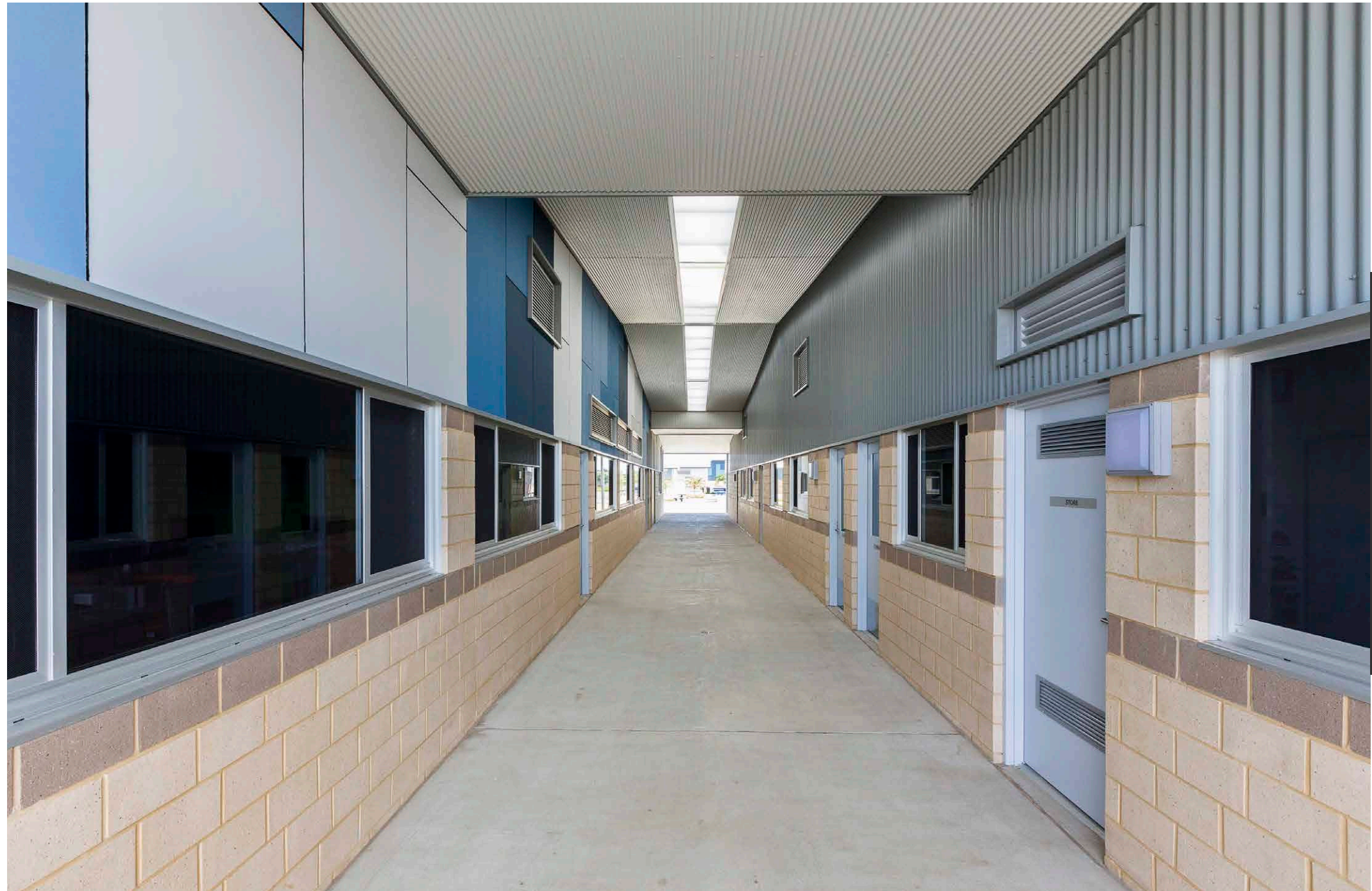
13 // PRIVATE RESIDENCE // ARCHITECT - ARIANE PREVOST ARCHITECTS



14 // WAIKERIE GOLF AND COUNTRY CLUB // ARCHITECT - BRAD STEINERT



15 // PRIVATE RESIDENCE OTTOWAY // BUILDER - THORNE CONSTRUCTIONS



16 // COASTAL LAKES COLLEGE // ARCHITECT - MODE DESIGN // BUILDER - EDUWEST BADGE PERKINS JV // INSTALLER - ROOFING 2000

www.revolutionroofing.com.au

SOUTH
AUSTRALIA

5-17 Taminga Street
Regency Park 5010
South Australia
T 08 8352 0911

WESTERN
AUSTRALIA

55B Hector Street
Osborne Park 6017
Western Australia
T 08 9217 9011

VICTORIA

42 Sarah Street
Campbellfield
Victoria
T 03 8580 1911

QUEENSLAND

T 0437 287 925