

REVOLUTION
EuroPlus
SERIES



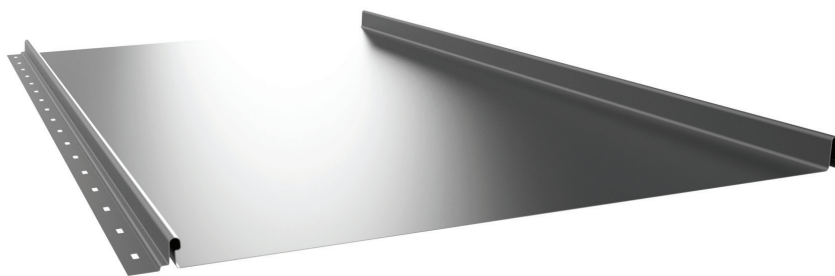
**Revolution
Roofing**
STEEL YOURSELF

NAILSTRIP

DATA SHEET

NAILSTRIP

The latest addition to the innovative Revolution Roofing product range, EuroPlus Nailstrip can complement any residential or commercial project with their ease of installation and high end aesthetic look.



SUBSTRUCTURE DETAILS

ROOF SHEETING

Installed on 19mm plywood substrate, ensuring the joints of the plywood is flush and there is a separation barrier placed between the chosen profile and plywood to avoid condensation issues.

WALL CLADDING

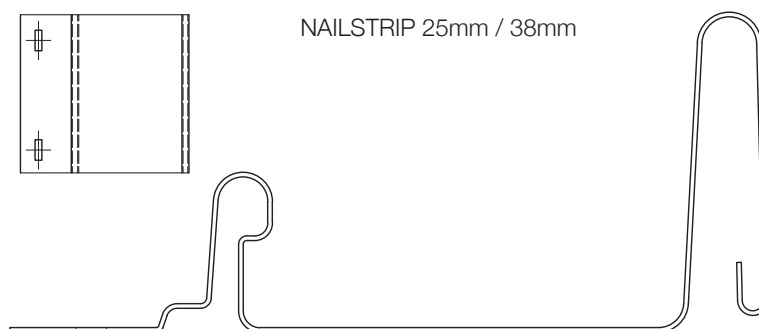
The panels can be installed on battens or furring channels at a 600mm spacing however Revolution Roofing recommend Nailstrip be installed on plywood to ensure the aesthetic integrity of the panel remains intact.

Revolution Roofing recommends that if installing horizontally, the Nailstrip profile is not suitable. For an alternative please see our SnapLock profile which can be used, however the cover width should be no greater than 265mm.

Standard Cover	265mm	350mm
Variable panel sizes	185mm minimum	465mm maximum
Rib height	25mm	38mm
Maximum length	8000mm	
Minimum roof pitch	7.5 degrees	
Available finishes	NextONE 0.55 BMT Metallic 0.55 BMT G300 NextONE Matt Finish 0.55 BMT NextREME AZ200 SMP NextREME Aluminium SMP NextFACTOR Aluminium PVDF	

FIXING DETAILS

After the installation on a suitably prepared substrate the Nailstrip is positively fixed every 300mm along the perforated fixing strip next to the male rib. The next panel is then positioned in to place; a small manner of force will be required to engage the female and male ribs together.



Standard cover available is 265mm and 350mm wide however Nailstrip can be produced between 185mm – 465mm cover.

Oil Canning is an inherent characteristic of non-ferrous metals with broad flat areas. The Architect, Builder, and Homeowner needs to be aware that oil canning may affect the overall aesthetic outcome. There are measures that can be taken during design and installation to minimise the risk of oil canning such as ensuring the plywood is flush, the panels are fixed vertically, limiting the continuous length of each panel, and reducing the size of the pan. For more information please go to our website, www.revolutionroofing.com.au